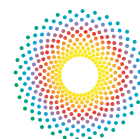


FOCUS ON YOUR **BRIGHT NEW FUTURE**

ENROLL IN THE OPHTHALMIC TECHNICIAN
EDUCATION PROGRAM AT THE SOUTHERN
CALIFORNIA EYE INSTITUTE



SCEI SOUTHERN
CALIFORNIA
EYE INSTITUTE

WELCOME TO OPPORTUNITY

If you dream of a rewarding career as part of a professional healthcare team where you can help people achieve a better quality of life, we invite you to consider becoming an ophthalmic technician.

At the Southern California Eye Institute (SCEI), our Ophthalmic Technician Education Program (OTEP) is one of only 14 such programs nationwide—and the only one in California that prepares you with the skills to become an ophthalmic technician, a career that is in very high demand.

We are committed to training the next generation of allied healthcare professionals to serve the eye care needs of the community. As a student at SCEI, you will experience a comprehensive program designed to give you every advantage in pursuing your career.

I look forward to your being part of SCEI and taking the next step in your new future.



Rohit Varma, MD, MPH
Founding Director
Southern California Eye Institute

ABOUT SCEI

The Southern California Eye Institute provides the highest level of vision care, using the latest technology and treatments to deliver the best possible outcomes to patients. Our expert physician-scientists are advancing innovations in stem cell and regenerative therapies, artificial intelligence and bioelectronic implants to further the prevention, early detection and treatment of eye diseases and conditions.

SCEI is part of CHA Hollywood Presbyterian Medical Center, a nationally recognized acute care facility that has cared for Hollywood and its surrounding communities since 1924. The medical center is a member of CHA Health Systems, a dynamic global healthcare organization in seven countries around the world.

A REWARDING CAREER

The Ophthalmic Technician Education Program (OTEP) at SCEI prepares highly skilled allied health professionals to serve the eye care needs of individuals of all ages.

Ophthalmic technicians are essential members of a professional vision care team. In this important position, you will be responsible for completing the initial portion of a patient's eye exam, including taking patient histories and conducting a variety of tests and procedures that inform ophthalmologists in the diagnosis and treatment of eye conditions. You also will work closely with patients and their families to help them understand their vision conditions.

THE OTEP PROGRAM

Through OTEP's series of convenient online courses, you learn the structure and function of the visual system and a broad range of diagnostic tests and procedures, along with how to care for and educate patients and to fulfill your role on the healthcare team.

Your coursework is supplemented by clinical rotations that take place at SCEI and our affiliated health centers. In these hands-on sessions, you gain real-world experience in the testing, diagnosis and treatment of eye conditions, under close supervision of ophthalmology professionals.

In just 12 months, you can be on your way to an exciting new career.



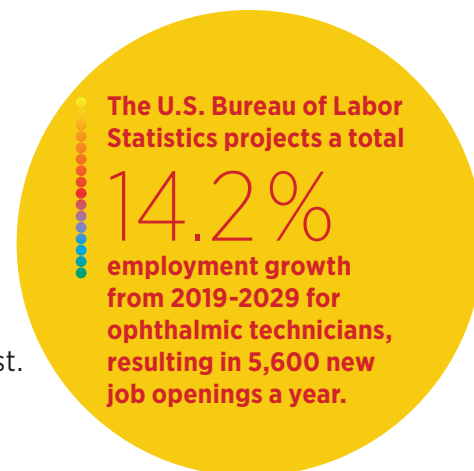
OTEP at SCEI is the
ONLY
program in California
that prepares you with
the skills to become an
ophthalmic technician.

OTEP CURRICULUM

OTEP online courses take place on Tuesdays and Thursdays from 6 pm to 8 pm, for 4 hours of instruction per week. Students are highly encouraged to attend and participate in all online courses live. However, lectures are recorded and available for viewing at other times.

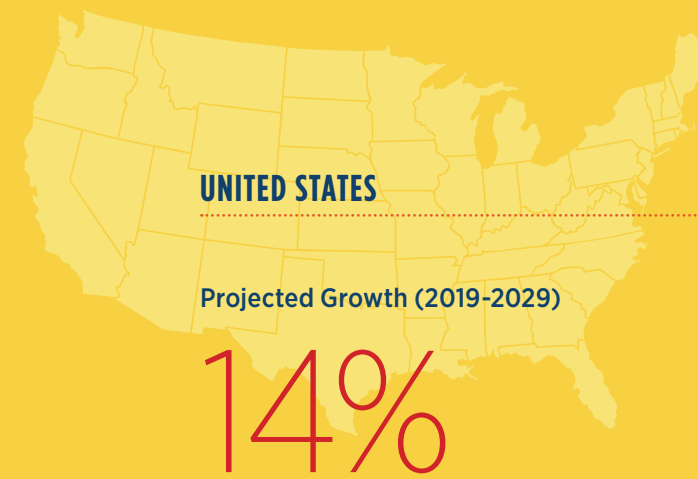
COURSE	TITLE
Module 1	Ocular Anatomy and Physiology
Module 2	Visual Assessment
Module 3	Lensometry
Module 4	Keratometry and Contact Lenses
Module 5	Refraction and Optics
Module 6	Ocular Motility
Module 7	Pupillary Assessment
Module 8	Visual Fields
Module 9	Glaucoma and Tonometry
Module 10	Microbiology
Module 11	Pharmacology
Module 12	General Medical Knowledge
Module 13	Ophthalmic Imaging
Module 14	History Taking
Module 15	Supplemental Skills
Module 16	Surgical Assisting
Module 17	Medical Ethics, Legal, and Regulatory Issues

Clinical Rotations: Students also will spend 15 hours a week in clinical rotations, practicing professional and technical skills learned in class. The scheduling of clinic time is flexible, offering you the ability to work part-time while enrolled in OTEP if you desire. Small class sizes ensure you receive the personal attention to learn at your best.



EMPLOYMENT TRENDS: HOT JOB!

Ophthalmic Technicians are in demand—and that demand is growing.



U.S. source: Bureau of Labor Statistics. California source: Projections Central.

OTEP PREREQUISITES

All applicants to SCEI's Ophthalmic Technician Education Program must have a high school diploma or a high school equivalent certificate (GED) by the start date of the program.

COURSE REQUIREMENTS

Students are required to attend a minimum of 80% of their online courses to maintain good academic standing in OTEP. In addition, you must maintain a minimum grade of C (70%) in every class and receive a passing grade in all clinical rotations. Homework, quizzes and tests are mandatory for each course and must be completed and submitted by set deadlines.

TUITION FEE

The tuition cost to participate in OTEP has been waived for the 2022-2023 academic year due to the generous support of the Fox Family Foundation. Upon acceptance to the program, a \$350 non-refundable deposit is due to secure a position in OTEP.



Ranking
among states
for Ophthalmic
Technician
Employment

OPENING A DOOR: CERTIFICATION

Once the program receives International Council of Accreditation (ICA) accreditation, OTEP graduates will be eligible to qualify for certification from the International Joint Commission on Allied Health Personnel in Ophthalmology (IJCAHPO). IJCAHPO's mission is to promote global eye health and prevent blindness through training program accreditation, education and the certification of allied ophthalmic personnel.

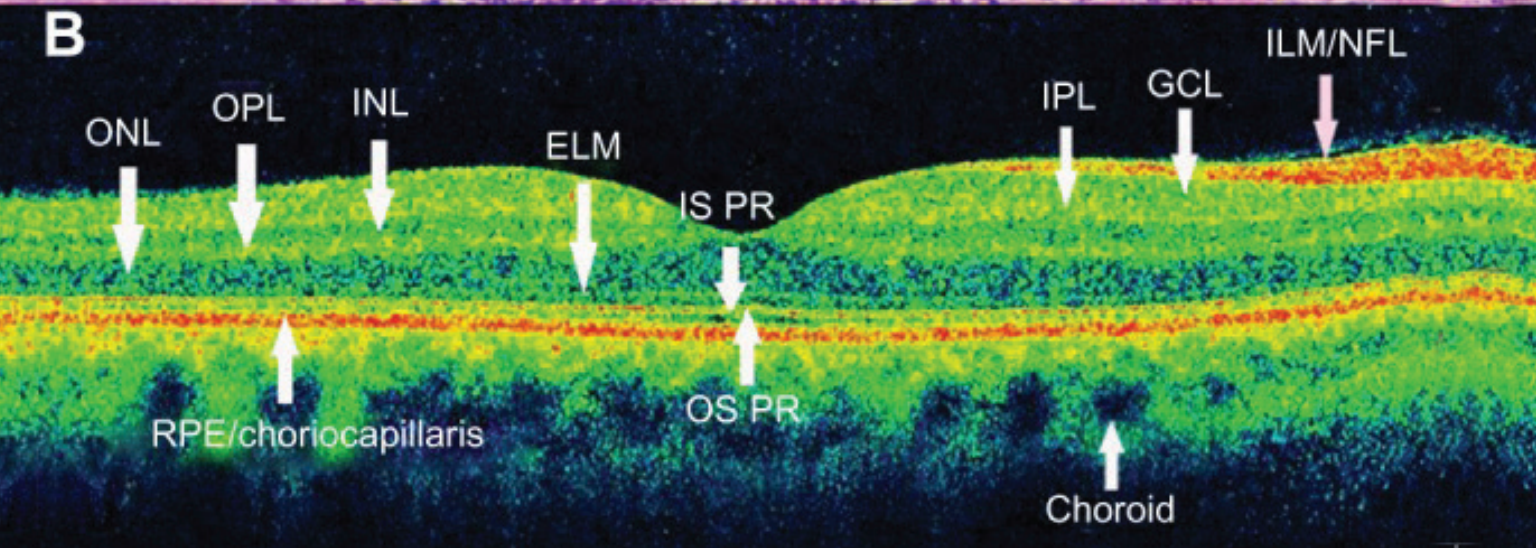
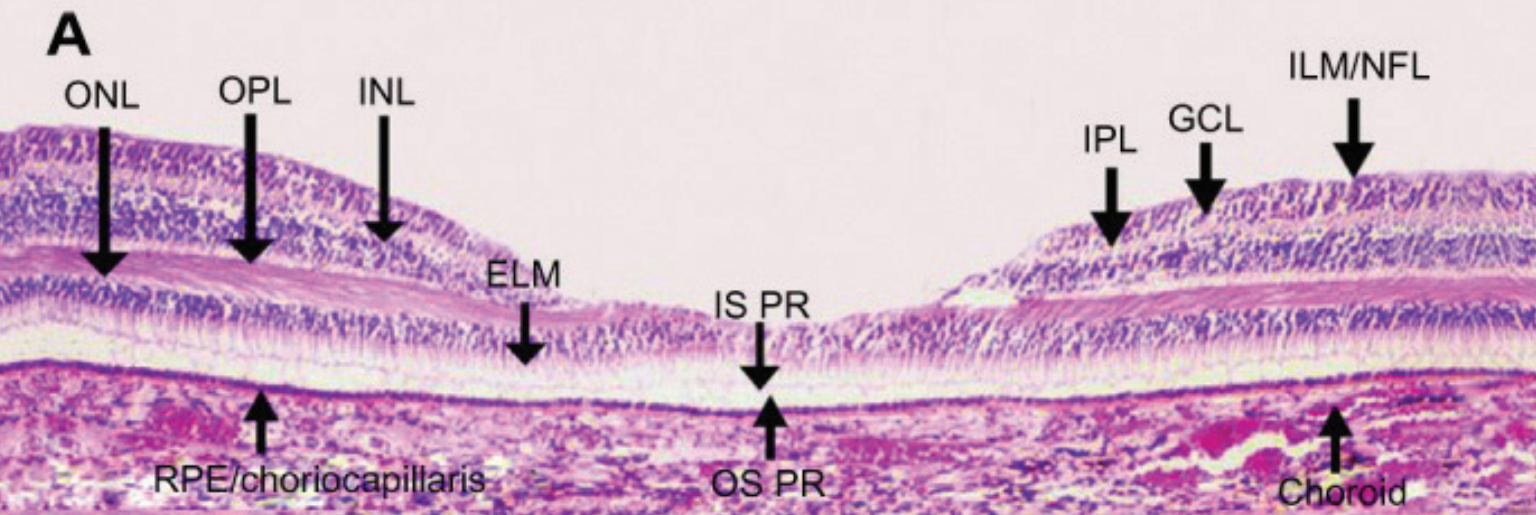
Having both OTEP training and the IJCAHPO stamp of approval tells potential employers you would be an asset to their team. Learn more about JCAHPO certification at www.jcahpo.org.



**U.S. News &
World Report
ranks Ophthalmic
Technician as 15th
BEST JOB
Without a College
Degree nationwide.**

START YOUR FUTURE NOW. APPLY TO OTEP TODAY.

The OTEP application is online at sceyes.org/otep. There is no fee to apply. For any questions, please contact OTEP Coordinator Dr. Carlos Lastra Gonzalez, at carlos.lastra@sceyes.org.



Shown above are layers of the retina, captured by optical coherence tomography (OCT).



SOUTHERN CALIFORNIA EYE INSTITUTE

sceyes.org | 1.833.270.EYES (3937)

Locations in Los Angeles, Pasadena,
Beverly Hills and Bakersfield

Los Angeles Headquarters:

CHA Hollywood Presbyterian Medical Center
1300 N. Vermont Avenue, Suite 101
Los Angeles, CA 90027